

CERTIFICATE OF LOCATION OF GOVERNMENT CORNER

EAST QUARTER Corner of Section 33, Township 108 N, Range 40 W, 5th P.M.

STATE OF MINNESOTA, County of MURRAY

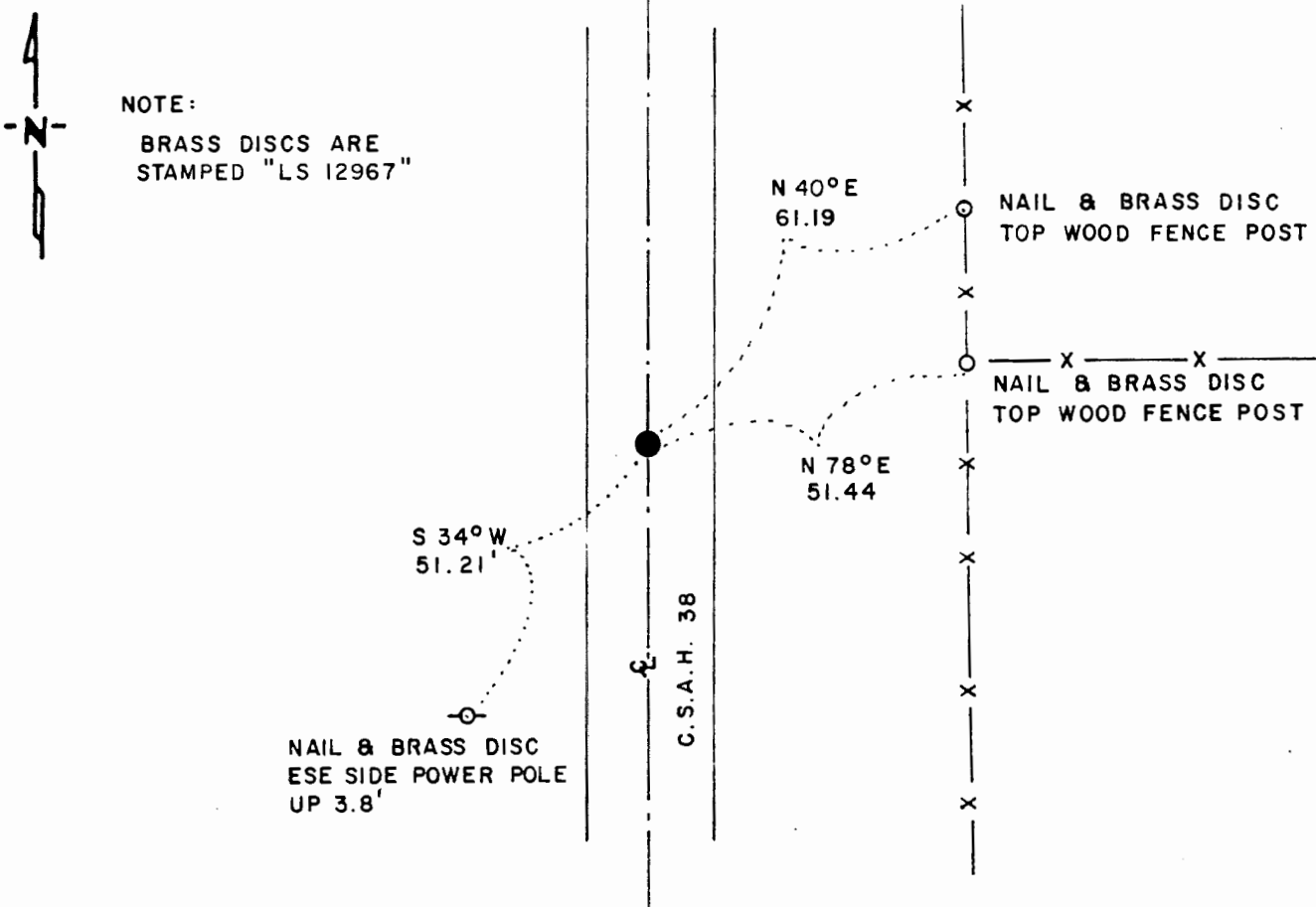
At the corner location shown on the sketch

■ On 10-12-89 found a 8" DIAMETER CONCRETE CYLINDER, DOWN 1.2'
DATE

■ left monument as found, □ lowered monument, □ removed monument (explain)

■ On 10-12-89 placed a RAILROAD SPIKE, DOWN 0.1'
DATE

SKETCH OF REFERENCE TIES



NOTE:
BRASS DISCS ARE
STAMPED "LS 12967"

BEARINGS OBSERVED WITH COMPASS

Statement of evidence relative to this corner location is on back of page LRP 12-29-89
WMA 1474

I hereby certify that this document and the data contained herein was prepared by me or under my direct supervision

Lowell R. Pommeroy Jr. 12-29-89
SIGNATURE DATE

Registration No. 17005

- Land Surveyor, □ Professional Engineer
 □ County Surveyor □ County Engineer

OFFICE OF THE COUNTY RECORDER
 County of MURRAY

I hereby certify that this document was filed in the Co. Recorders office at _____ M. on the _____ day of _____ A.D., 19____

County Recorder James V. Johnson

By JAN 8 1990, Deputy
 DOCUMENT NO. _____

East Quarter Corner Section 33, Township 108 North, Range 40 West

The DNR Bureau of Engineering contacted the following offices for information on this corner:

MN Secretary of State
Murray County Recorder and Highway Engineer
Bell Surveying at Worthington
RCM at Gaylord
Lyle Moseng at Marshall
Madsen Land Surveying at Fairmont

1861 The U.S. General Land Office field notes in the Secretary of State's Office show this corner is marked with a wood post set in mound of earth with pits and trench dug around the mound.

No Date Surveyor's Record Book, obtained from the County Highway Engineer's Office, contains a survey of Section 34 by J. W. Woolstencroft. Survey states "found the center of Section 34 and divided the north half of the section into two equal halves, north half and south half. Stakes set on corners and on lines."

1933 Surveyor's Record Book obtained from the County Highway Engineer's Office, 1936 contains the following about the corner by F. A. March:

"Stone", tack in tele. pole, SE 42.9 ft., tack in tele. pole NE 29.7 ft., stone 5.5 ft. south of fence line

Later date describes the corner as a "concrete stone" with ties:

R.P. tack in telephone pole NE 36.2 ft.

R.P. tack in light pole SW 47.8 ft.

fence line running east is 6 ft. north of stone

Corner is shown to measure 2641.5 ft. from adjoining section corners.

1979 A Certificate of Survey, worksheet and field notes, obtained from RCM, show this corner as a found 8" round concrete cylinder down 10". Three reference ties are shown to the corner. A note is made that a fence line east is 2 ft. south of corner, and the old record distance of 2641.50 ft. fits the distance from the southeast corner Section 33. This information is also contained in the County Highway Engineer's Office in a new tie book.

1985 A Certificate of Survey, worksheet and field notes, obtained from Madsen Land Surveying, surveyed by Gary Martin, RLS #12967, show this corner as a railroad spike set over a concrete monument. Corner is shown to measure:

2635.55 ft. from the southeast corner Section 33

2640.56 ft. from the northeast corner Section 33

2 ft. north of fence east, on fence line west

Three reference ties are shown to the corner.

1989 October, the DNR Bureau of Engineering conducted a search for the corner and found a railroad spike down 0.1 ft.. Cut a 1 ft. by 1 ft. hole in the bituminous surface of the north-south road, centered on the railroad spike. Found a 1/2" by 14" rebar under the railroad spike and an 8" diameter concrete cylinder down 1.2 ft.. On top of the cylinder were seven nails rapped in old red ribbon. Reset the railroad spike, which was over the concrete cylinder, as found. Record ties were found to be in agreement with the railroad spike. Corner was found to measure:

2635.29 ft. from the southeast corner Section 33

2640.55 ft. from the northeast corner Section 33

Analysis of the above information led the DNR Bureau of Engineering to conclude that the found concrete cylinder marks the location of the corner.